

MetroControlTM Pro

From single lamp to a central control room

MetroControlTM Pro software is built around a powerful client-server architecture and real-time database. It is the ideal solution for large scale control applications that connects hundreds of MetroControlTM Gateways and thousands of SuperHIDTM ballasts over GPRS and wireless communications.

MetroControlTM Pro offers scalable network architecture, multiple operator stations, hot-backup configuration and Web-enabled remote connections.

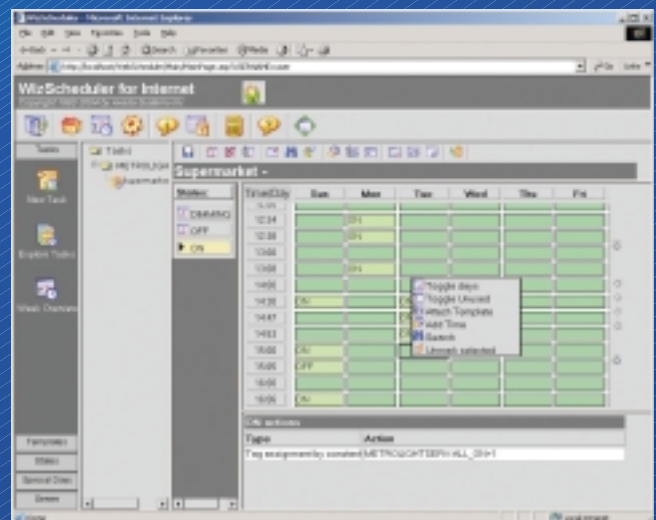
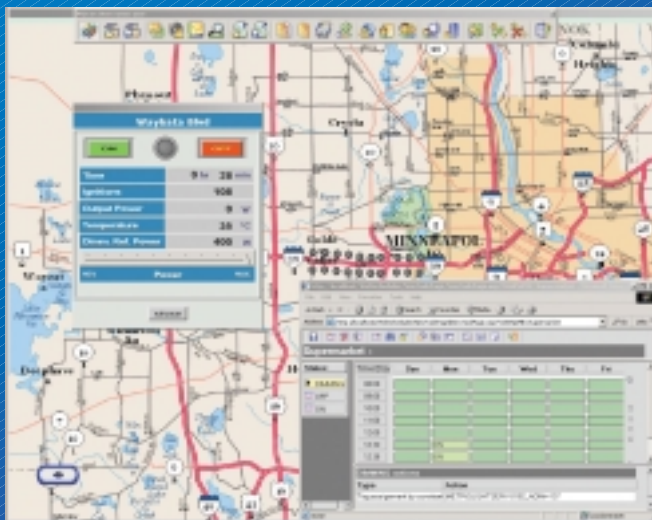
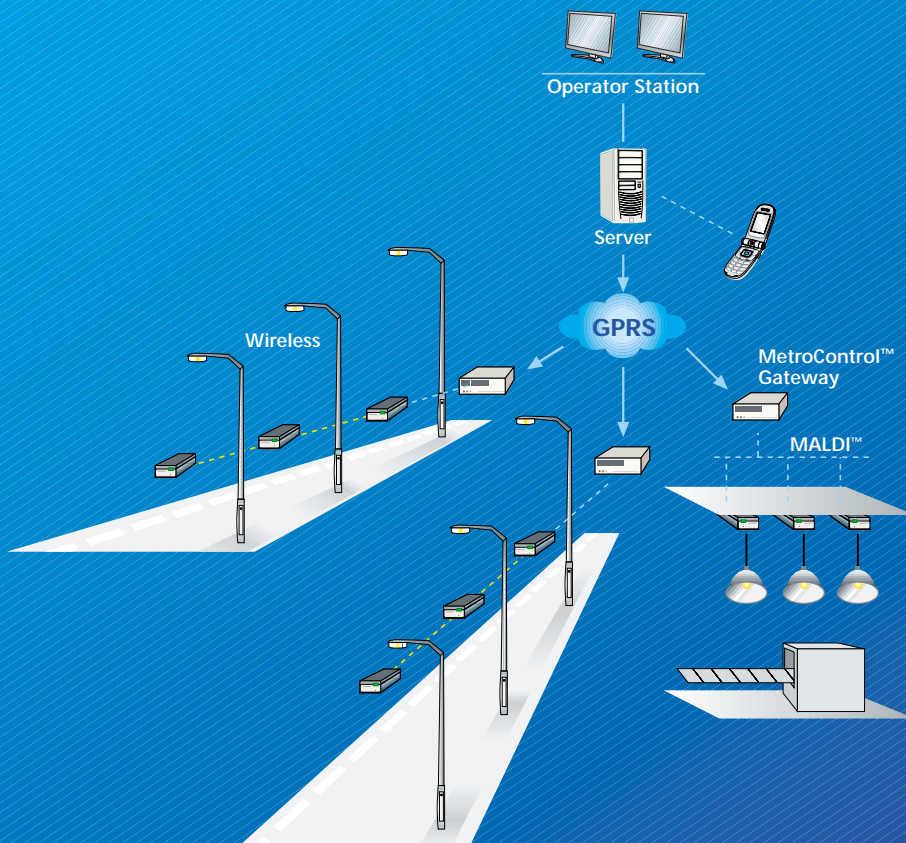
Superior Features

- Reliable and robust client server architecture suitable for large-scale applications
- Easy-to-use graphical user interface with animated graphical pictures, alarm summaries, on-line and historical charts
- Interactive maps with dynamic zoom for presenting complete city lighting applications
- Sophisticated scheduler for intelligent planning of lighting regime
- Scalable network architecture
- Web-enabled user interface for remote control and monitoring
- Advanced alarm management for transmitting alarms messages to mobile operators
- Built-in authorization and authentication mechanisms



Powering the World of Light

MetroControl™ Pro



USA:
Metrolight Inc., 342 Cool Springs Blvd., Ste. 204,
Franklin, TN 37067, USA
Tel: (615) 771-9609, Fax: (615) 771-8695

International:
Metrolight Ltd., P.O.Box 8194,
Netanya 42160, Israel
Tel: + (972)-9-8633060, Fax: + (972)-9-8633050

info@metrolight.co.il / www.metrolight.com